



[WWW.WAHL-CONSUMER.COM](http://WWW.WAHL-CONSUMER.COM)

WAHL CLIPPER CORPORATION  
World Headquarters  
P.O. Box 578, Sterling, IL 61081

Wahl (UK) Ltd.  
Horne Bay Trade Park  
Sea Street, Horne Bay, Kent  
CT6 8JZ, England

Wahl International Consumer Group B.V.  
Engelenburgstraat 36  
7391 AM Twello, The Netherlands

Wahl Australia PTY LTD  
PO Box 456  
Acacia Ridge QLD 4110  
Australia

Wahl Argentina  
Av. Alvarez Jonte 5655  
Buenos Aires (C1407GPK) Argentina

Wahl Clipper (Pty) Ltd  
PO Box 2916 Bedfordview,  
Gauteng 2007 South Africa

Wahl NZ Limited  
PO Box 38 323  
Wellington Mail Centre  
Lower Hutt 5045, New Zealand

WAHL MEA FZCO  
Office # 123, Building # 6E-A  
PO Box, 371395  
Dubai Airport Free Zone, Dubai  
United Arab Emirates

WAHL Russia  
(ООО «Волл Рус»)   
Российская Федерация  
129164, Москва,  
Ракетный Бульвар, 16  
info@wahlrus.ru

Wahl India Grooming Products Pvt.Ltd.  
B-1002, 10TH Floor, B-Wing, Lotus  
Corporate Park, Off Jay Coach Flyover,  
Western Express Highway,  
Goregaon-East, Mumbai-400 063

Wahl Clipper Brasil  
Rodovia Geraldo Scavone, 2300  
UC 45, Pedregulho,  
Jacareí - SP, CEP: 12305490

WAHL Spain  
Fernando Giner de los Rios 12  
46910 Sedavi  
Valencia, Spain

**WAHL®**

MODEL/TYPE 5560-ALK

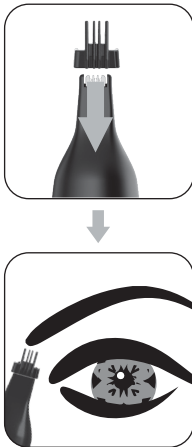


© 2017 Printed in China  
Wahl® is a registered trademark  
of Wahl Clipper Corporation

Part No. 56508



1. A top-down view of the device's cap with a curved arrow indicating a counter-clockwise rotation.
2. A side view of the cap being rotated clockwise onto the device body.
3. A side view of the cap being pushed forward along the device body.
4. A side view of the cap being rotated clockwise to lock it in place.



1. An illustration of a human eye with a spray nozzle tip pointing towards it.
- An illustration of a human ear with a spray nozzle tip pointing into it. The entire illustration is crossed out with a diagonal line, indicating that the device should not be used in the ear.

2. A side view of the cap being rotated counter-clockwise to unlock it.

3. An illustration of the cap being rinsed with water, showing splashing water around it.

